



**JACQUES PHILIPPE**

SWISS  MADE

OPERATING INSTRUCTIONS



# MODERNLY TRADITIONAL

## CONTENTS

INTRODUCTION	5
INTERNATIONAL WARRANTY	7
SETTING THE TIME	10
SETTING THE DATE	12
CHRONOGRAPH FUNCTION	14
WINDING THE WATCH	16
WATER RESISTANCE	18
GENERAL INFORMATION	20

# INTRODUCTION

Mastery, takes time.  
It loves effort, dedication, and commitment.

Craftsmanship must be blended with years to bring forth perfection.

Hours must pass so that...  
A watch adorned with perfect details can be designed.

For us, the essence lies in modernizing the mastery brought by experience.  
In combining the deep rooted "Swiss Made" tradition with contemporary design.  
In bringing quality materials together with creativity.

Yesterday, today, tomorrow...  
It doesn't matter.

Jacques Philippe, presents the thesis of "modern traditionalism".  
Achieving what's said to be impossible without compromising either.

It takes meticulously crafted watches with mastery to the next level.

The power of its designs comes from being "timeless".

Jacques Philippe  
Modernly Traditional

# INTERNATIONAL WARRANTY

Jacques Philippe watches are the product of our Manufacture and are high-quality timepieces. Before your watch leaves the Manufacture, it is subjected to numerous stringent quality checks. However, should there be any manufacturing faults, an international warranty means your watch is covered for two years starting from the date of purchase. This warranty is observed by service centres approved by Jacques Philippe worldwide if the following cumulative conditions are observed:

- 
- The watch must have been purchased from an official dealer as approved by Jacques Philippe. The name or stamp of the authorised retailers, the date of purchase and the watch reference are clearly detailed on the guarantee card.
- Your watch must have been worn under normal conditions and maintained in accordance with Jacques Philippe's recommended maintenance instructions; it must not have been mishandled.
- The warranty card, the only valid proof of purchase, must be sent along with your watch to an authorized Jacques Philippe Service Centre.

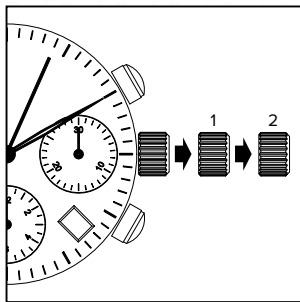


## SETTING THE TIME

**Tip:** It is easier to set the time while holding the watch rather than wearing it. We recommend gentle, regular turns when rotating the crown.

**Important for models with a date display:**

- Always set the time in a clockwise direction to avoid damaging the movement.
- Start by performing one complete rotation to 12 o'clock to check the part of the day for which you are setting the time: if the date changes when the hand passes 12 o'clock, your watch is showing the morning time. If the date does not change, your watch is showing the afternoon time.



Pull the crown out to position (2). Rotate the hands clockwise to indicate the desired time. At the time signal, push the crown back against the case.

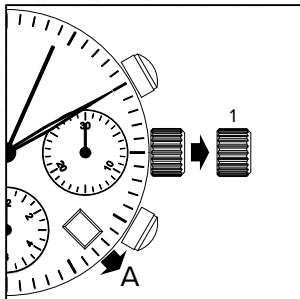
## SETTING THE DATE

**Important:** Before changing the date(A), move the hands to between 2 o'clock and 6 o'clock, always rotating them clockwise.

Pull the crown out to position (1). Rotate the crown until the desired date(A) appears. Once the date has been set, you can set the time (crown in position (2)). Push the crown back against the case.

**Note:** The watch keeps running while the date(A) is being set.

**Tip:** To verify the morning (AM) or afternoon (PM) time based on the date(A) movement, we recommend setting the date to the day before the desired date and winding through the hours to obtain the desired date and time in the morning or afternoon.



# CHRONOGRAPH FUNCTION

### **Start/Stop**

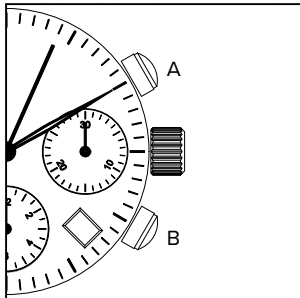
Press the pusher (A) once to start timekeeping, and again to stop.

### **Resuming the timekeeping function**

Press the pusher (A) again to resume the timekeeping function.

### **Resetting**

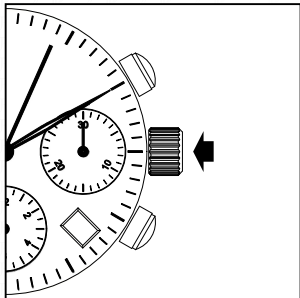
Once the chronograph has stopped, press the pusher (B) firmly to send the chronograph hand and the totalisers back to zero.



# WINDING THE WATCH\*

\*For Mechanical Watches

If your watch is fitted with an automatic winding mechanical movement, it is wound via the crown or the effect of the oscillating weight. When the watch is worn, the motion of the wrist activates the oscillating weight to wind the movement. In order for the automatic winding to work properly, the watch must be worn for at least 12 hours per day, for several days.

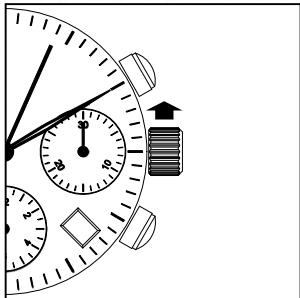




### When your watch has stopped

Not wearing the watch enough causes it to stop. Hold the watch in your hand and turn the crown at least 30 times clockwise. The barrel that contains the mainspring has now been wound. If you do not wear your watch during the night, turn the crown a few times the following morning before you put it on.

**Note:** For models equipped with a screw-down crown, unscrew the crown before winding the watch. Screw in the crown after the operation.



# WATER RESISTANCY

## PROTECTION OF THE QUALITY OF YOUR WATCH

There are several types of waterproof watches as shown on the table below;

Explanation		WATERPROOF UP TO 3 ATM	WATERPROOF UP TO 5 ATM	WATERPROOF UP TO 10/20 ATM
Indication	Caseback	WATER RESIST(ANT)	WATER RESIST(ANT) 5 BARS OR WATER RESIST(ANT)	WATER RESIST(ANT) 10/20 BARS OR WATER RESIST(ANT)
	Dial	WATER RESISTOR NO SIGN	WR 50 OR WATER RESIST 50	WR100/200 OR WATER RESIST 100/200
Use of the crown and buttons when the watch is wet or under water		NO	NO	NO
Diving with oxygen tube		NO	NO	NO
Water sports, free diving without tube		NO	NO	YES
Swimming		NO	YES	YES
Moisten, sweating, light rain, etc.		YES	YES	YES

- Waterproof for daily use (Up to 3 ATM): These types of watches are waterproof and can resist unpressurized water splashes. For example, you can use this watch while washing your face, but it is not designed for use underwater.
- Watches for daily use, with water resistance up to 5 ATM: Water resistance of this type of watches is more. You can use these watches while swimming, but they were not designed for underwater dives.
- Watches for daily use, with water resistance up to 10/20 Atmospheres (ATM): This type of watch can be used while diving, but it is not designed for dives involving helium gas.

# GENERAL INFORMATION

## **MAINTENANCE, REPAIR OR CLEANING OF THE PRODUCT BY THE CONSUMER**

- If the watch has been used in salty water, rinse with clean water and dry it with a soft cloth.
- If salty water enters into your watch, place it in a cardboard or plastic bag and take it to an Authorized Dealer or Authorized Service Center. Otherwise, the pressure inside the watch may increase and parts such as the quartz, crown and buttons may be damaged.
- Use a soft brush to clean dust and dirt from the metal bracelet.
- Dust and dirt can accumulate in the grooves of the case and the strap, which may stain your clothes; to prevent this, be careful when cleaning it.
- If the dust and dirt accumulated between the chamber and the crown are not cleaned, it may cause difficulty while unlocking/pulling the crown. To clean dust and dirt, turn the crown occasionally while it is in its normal position and then brush it.
- Use a dry and soft cloth to clean the sweat and dirt from the leather strap.
- Remove the dirt on metal, plastic or rubber straps in a soft soap melt.
- While cleaning or using your watch, avoid exposure to chemicals, solvents, gaseous environments (such as alcohol, acetone, thinner, cleaning gasoline) and cosmetics. These substances may cause discoloration or tarnishing of the case and the strap, damage to the seals and other parts, or deterioration of the stones or accessories on the watch.

## INFORMATION ABOUT ERRORS IN USE

- Protect your watch from hard impacts or strong strikes.
- Avoid exposing your watch to strong electrical areas or magnetic fields (such as dect phones, mobile phones, speakers) as these may damage its mechanical structure.
- Keep watches with leather straps away from water, sea water and sweat to prevent deformation of the straps.
- Use your watch in accordance with its functions and pressure resistance specifications.
- Do not push the buttons or release the crown while the watch is in the water.
- Ensure the crown of your watch is securely pushed into its first position while in use. For watches with a screw-down crown, ensure it is tightly screwed. Avoid using the crown or buttons when the watch is wet or your fingers are wet.
- Set your watch by following the instructions provided in the user manual.
- Clean scratches on the external surfaces of the watch using a soft cloth.
- The warranty does not cover any damage to components such as the case, strap, glass, or crown, including scratching, breaking, or rupture.
- Be cautious with perfumes and cosmetics containing chemicals like alcohol as these may damage the case, strap or bracelet when the watches is worn on your wrist.

## **WARNINGS**

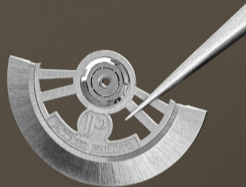
- Do not keep your watch under direct sunlight, in extremely hot or extremely cold conditions for a long time.
- Extreme heat (50°C - 35°C) may affect the operation of your watch or reduce its battery life.
- Extreme cold (50°C - 35°C) may cause the watch to gain or lose time.
- Your watch is designed to resist impacts under normal usage conditions.
- Damage resulting from user errors is not covered under warranty.
- If there is a protective film or label on the back of your watch, ensure it is removed before use. Sweat or water trapped under the film or label may cause corrosion.

## **ISSUES TO CONSIDER DURING TRANSPORT AND SHIPMENT**

- Wear your watch securely on your wrist during transport to avoid damage.
- Avoid subjecting your watch to strong impacts while wearing it, as this may cause damage.

## **WARNINGS ABOUT SITUATIONS THAT MAY BE HAZARDOUS OR HARMFUL TO HUMAN AND ENVIRONMENTAL HEALTH DURING USE**

- There are no known situations in which the use of this watch is hazardous or harmful to human or environmental health.







JACQUES PHILIPPE

SWISS  MADE

[www.jacquesphilippe.com](http://www.jacquesphilippe.com)